

Anchorage 2335

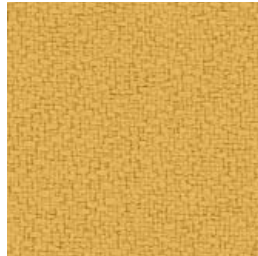
Panel



Birch
2129



Vanilla
2130



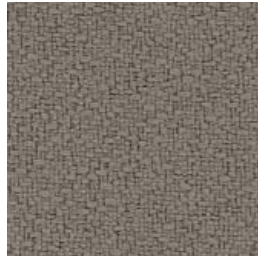
Sunshine
2082



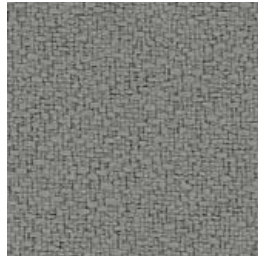
Straw
2034



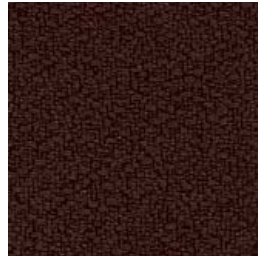
Angora
2035



Goose
2049



Asteroid
2053



Coffee Bean
2083



Amber
2020



Pumpkin
2021



Geranium
2084



Magenta
2692



Red Delicious
2014



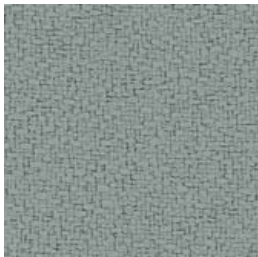
Henna
2052



Mulberry
2044



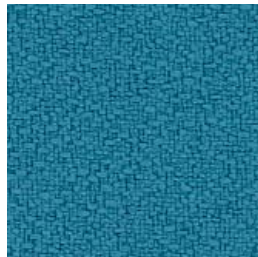
Aubergine
2036



Slate
2017



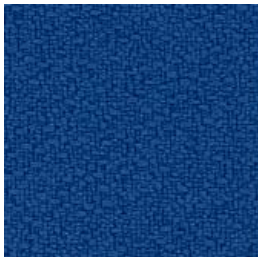
Quarry Blue
2026



Waterfall
2691



Wolf
2027



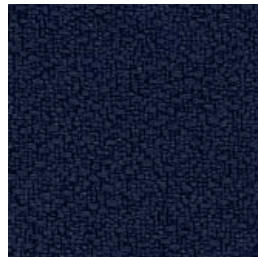
Lapis
2094



Thistle
2085



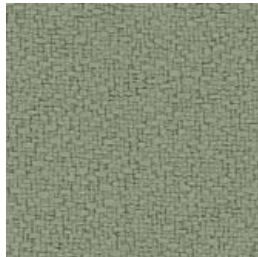
Cobalt
2045



Midnight
2025



Green Olive
2048



Eucalyptus
2047



Green Apple
2087



Cumin
2050



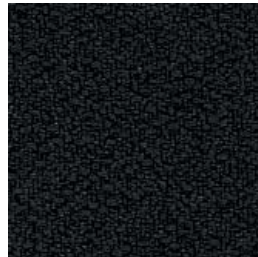
Willow
2028



Fossil
2093



Graphite
2079



Onyx
2016

Guilford of Maine

guilfordofmaine.com

5300 Corporate Grove Drive SE
Suite 250
Grand Rapids, MI 49512

800 544 0200 Sales Service
207 876 3806 Fax

12/11

Anchorage 2335

Panel

Specifications

Content

35% post-consumer recycled polyester
65% pre-consumer recycled polyester

Weight

15.0 ± 1.0 oz./lin. yd.

Width

66" min. useable

Repeat

none

NRC of anechoic termination

1.00


NRC of fabric in front of anechoic termination

.85


Cleaning Code


W-S

Performance

 **Colorfastness to Light (AATCC 16 Option 3)**
Grade 4 min. at 40 hours

 **Colorfastness to Crocking (AATCC 8)**
Grade 4 min. dry & Grade 3 min. wet

 **Breaking Strength (ASTM D5034)**
275 lbf min. warp and fill

 ***Flammability (ASTM E84)**
Class I or A

Miscellaneous

Colors may vary slightly between dye lots.
This is a directional fabric.
Application testing of this product is recommended.
Also available in 54" width (Open House 2334).

Visit guilfordofmaine.com for complete specs and samples.



Terratex is a registered trademark of True Textiles, Inc. and designates fabrics that are made from 100% recycled or compostable material using increasingly sustainable manufacturing practices to produce a high quality product that is recyclable at the end of its useful life. (terratex.com)



CO₂ emissions from 100% of the electricity used by the manufacturer to produce this product have been measured and offset in accordance with The CarbonNeutral Protocol.



This pattern is included in the underwriters laboratory panel fabric recognition program. Additional testing of this U.L. recognized component fabric is not required on approved panels from participating manufacturers.

ACT registered certification marks.