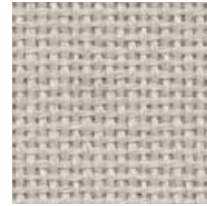


# FR701® 2100

Panel



**Eggshell**  
144



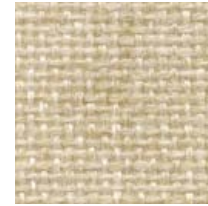
**Pearl**  
481



**Opal**  
394



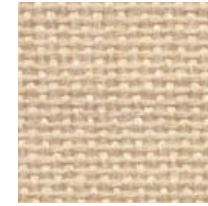
**Desert Sand**  
758



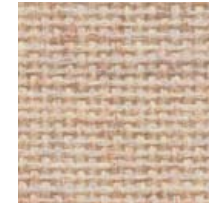
**Wheat**  
130



**Buff**  
460



**Bone**  
748



**Vanilla Neutral**  
403



**Straw**  
747



**Sunshine**  
797



**Silver Papier**  
538



**Blue Neutral**  
401



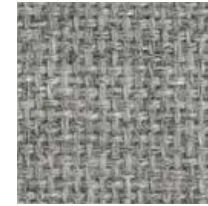
**Blue Papier**  
539



**Cement Mix**  
750



**Silver Neutral**  
406



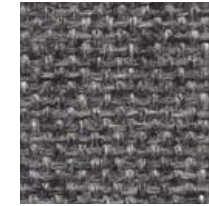
**Grey Mix**  
238



**Steel Grey**  
471



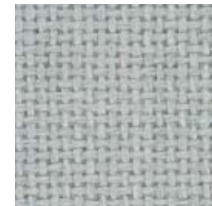
**Flannel**  
795



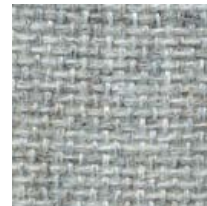
**Medium Grey**  
298



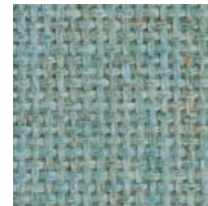
**Black**  
408



**Coin**  
794



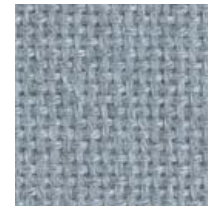
**Verte Papier**  
561



**Green Neutral**  
402



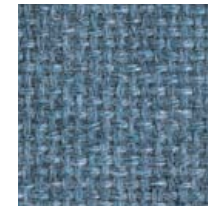
**Lake**  
756



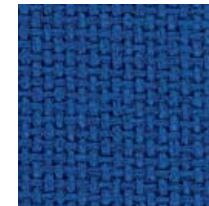
**Crystal Blue**  
175



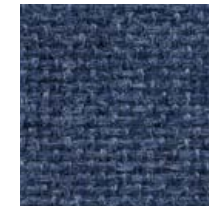
**Bayberry**  
486



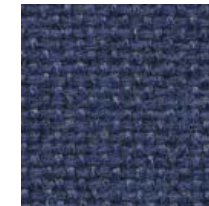
**Wedgewood**  
150



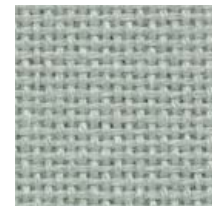
**Cobalt**  
420



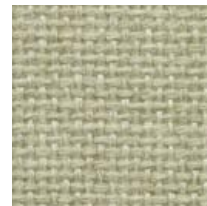
**Baltic**  
153



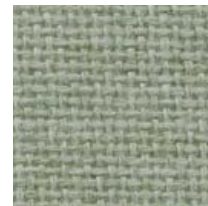
**Blue Plum**  
553



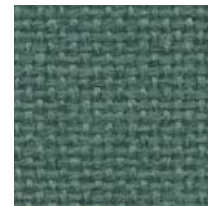
**Eucalyptus**  
468



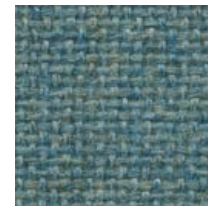
**Leaf**  
755



**Stream**  
757



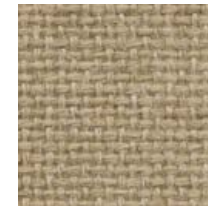
**Blue Spruce**  
467



**Aquamarine**  
381



**Dune**  
749



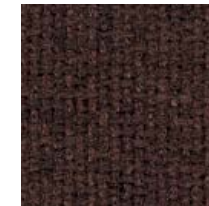
**Light Moss**  
754



**Earth**  
792



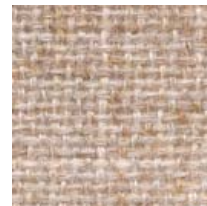
**Moleskin**  
796



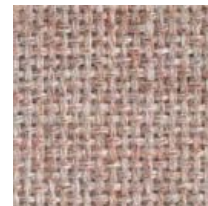
**Chocolate**  
793



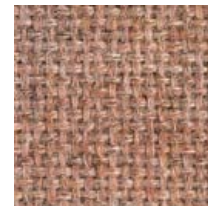
**Quartz**  
380



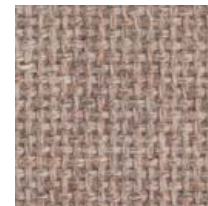
**Apricot Neutral**  
404



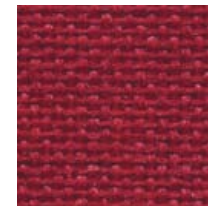
**Cherry Neutral**  
400



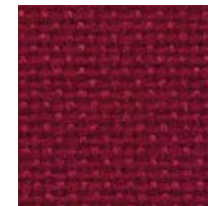
**Cinnabar**  
422



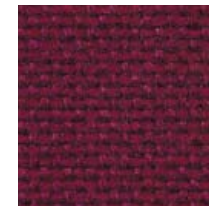
**Pumice**  
423



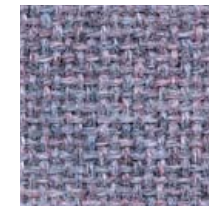
**Red**  
799



**Claret Accent**  
418



**Deep Burgundy**  
556



**Amethyst**  
424



**Iris**  
798

## Guilford of Maine

guilfordofmaine.com

5300 Corporate Grove Drive SE  
Suite 250  
Grand Rapids, MI 49512

800 544 0200 Sales Service  
207 876 3806 Fax

12/11

## FR701® 2100

Panel

### Specifications

---

**Content**

100% post-consumer recycled polyester

**Weight**

16.0 ± 0.5 oz./lin. yd.

**Width**

66" min. useable

**Repeat**

none

**NRC of anechoic termination**

1.00

**NRC of fabric in front of anechoic termination**

.95


### Cleaning Code


---


W-S


### Performance

---

 **Colorfastness to Light (AATCC 16 Option 3)**  
Grade 4 min. at 40 hours

 **Colorfastness to Crocking (AATCC 8)**  
Grade 4 min. dry & Grade 3 min. wet

 **Breaking Strength (ASTM D5034)**  
150 lbf min. warp and fill

 **\* Flammability (ASTM E84)**  
Class I or A

### Miscellaneous

---

Colors may vary slightly between dye lots.  
This is a non-directional fabric.  
Application testing of this product is recommended.

Visit [guilfordofmaine.com](http://guilfordofmaine.com) for complete specs and samples.



Terratex is a registered trademark of True Textiles, Inc. and designates fabrics that are made from 100% recycled or compostable material using increasingly sustainable manufacturing practices to produce a high quality product that is recyclable at the end of its useful life. (terratex.com)



CO<sub>2</sub> emissions from 100% of the electricity used by the manufacturer to produce this product have been measured and offset in accordance with The CarbonNeutral Protocol.



This pattern is included in the underwriters laboratory panel fabric recognition program. Additional testing of this U.L. recognized component fabric is not required on approved panels from participating manufacturers.

\*ACT\* registered certification marks.